

Cabinet Front Face Frames

Cabinet front face frames are constructed of $\frac{3}{4}$ " x $1\frac{5}{8}$ " solid hardwood. Face frames are kiln-dried to prevent warping and finished with our Waypoint resilient finishing system. Face frame joints are pressure fitted, glued, double doweled and stapled.

Cabinet Side Panels

Cabinet side panels are $\frac{1}{2}$ " thick plywood with Waypoint resilient finishing system exteriors and natural woodgrain laminate finished interiors. Plywood can consist of a combination of veneer and furniture board layers to achieve superior product stability and finish quality. Plywood components meet the ANSI/HPVA hardwood and decorative plywood standards (www.hpva.org).

Cabinet Tops, Bottoms and Floors

Tops, bottoms and floors are $\frac{1}{2}$ " thick furniture board finished with the natural woodgrain Waypoint resilient finishing system.

Cabinet Back

Cabinet backs are constructed of $\frac{1}{8}$ " thick hardboard substrate with the inside surface finished with the Waypoint resilient finishing system.

Cabinet Shelves

Cabinet shelves are $\frac{3}{4}$ " thick furniture board finished with the natural woodgrain Waypoint resilient finishing system. Shelves are banded on one side with PVC edge banding. All shelves are adjustable and meet KCMA load standards of 15 pounds per square foot.

Drawer Systems

All cabinets with drawer(s) utilize natural finish $\frac{5}{8}$ " hardwood drawer body with $\frac{7}{32}$ " plywood bottom and Grass® Elite-Plus Full-Extension Glides with CushionClose®. This full-extension glide provides complete access to drawer contents. The integrated slow-close mechanism helps reduce slams and noise and utilizes unique air damper technology for whisper-quiet luxury. All drawers meet KCMA load standards of 15 pounds per square foot.

Deep Roll Out Trays

Deep Roll Out Trays utilize natural finish $\frac{5}{8}$ " dovetail hardwood drawer body with $\frac{7}{32}$ " printed furniture board bottom. Deep Roll Out Trays feature Full-Extension Hidden Glides® or Full-Extension CushionClose® Glides. All Deep Roll Out Trays meet KCMA standards of 15 pounds per square foot.

Hanging Rails

Base and Vanity top hanging rails are $\frac{3}{4}$ " thick hardwood, mortise and tenon joined and glued to the cabinet side panels. Wall cabinet hanging rails are $\frac{1}{2}$ " thick furniture board, glued and pinned into the cabinet back, cabinet side panels, and cabinet top and bottom.

Corner Blocks

Corner blocks are attached to help ensure cabinet squareness and allow for certain countertop installations.

Hinges

Fully concealed, self-closing CushionClose® Hinges are standard on all door styles. Hinges are 6-way adjustable, allowing superior in/out adjustment of $\frac{1}{8}$ ", up/down adjustment of $\frac{1}{4}$ " and side-to-side adjustment of $\frac{3}{16}$ " on Full Overlay and $\frac{1}{8}$ " on Standard Overlay. Hinges permit doors to open to approximately 105 degrees, allows less than $\frac{3}{16}$ " frame-to-door gap and have a self-closing feature that allows door to close unassisted when open approximately 20–30 degrees. $1\frac{7}{16}$ " Full Overlay and $\frac{9}{16}$ " Standard Overlay hinges are all steel construction with nickel-plated finish and exceed industry standard for durability.

Shelf Rests

Nickel plated $\frac{1}{4}$ " steel metal shelf rests are standard on all Wall cabinets and Bookshelves. Clear high-strength polycarbonate clip lock shelf rests are standard on all Base, Desk and Tall cabinets. Clip lock shelf rests lock shelves in place, prevent sliding and allow for easy shelf removal. Cabinets with the Mullion Frame Door (MFD) and Horizontal Frame Door (HFD) Options feature six position adjustable metal mullion shelf rests.

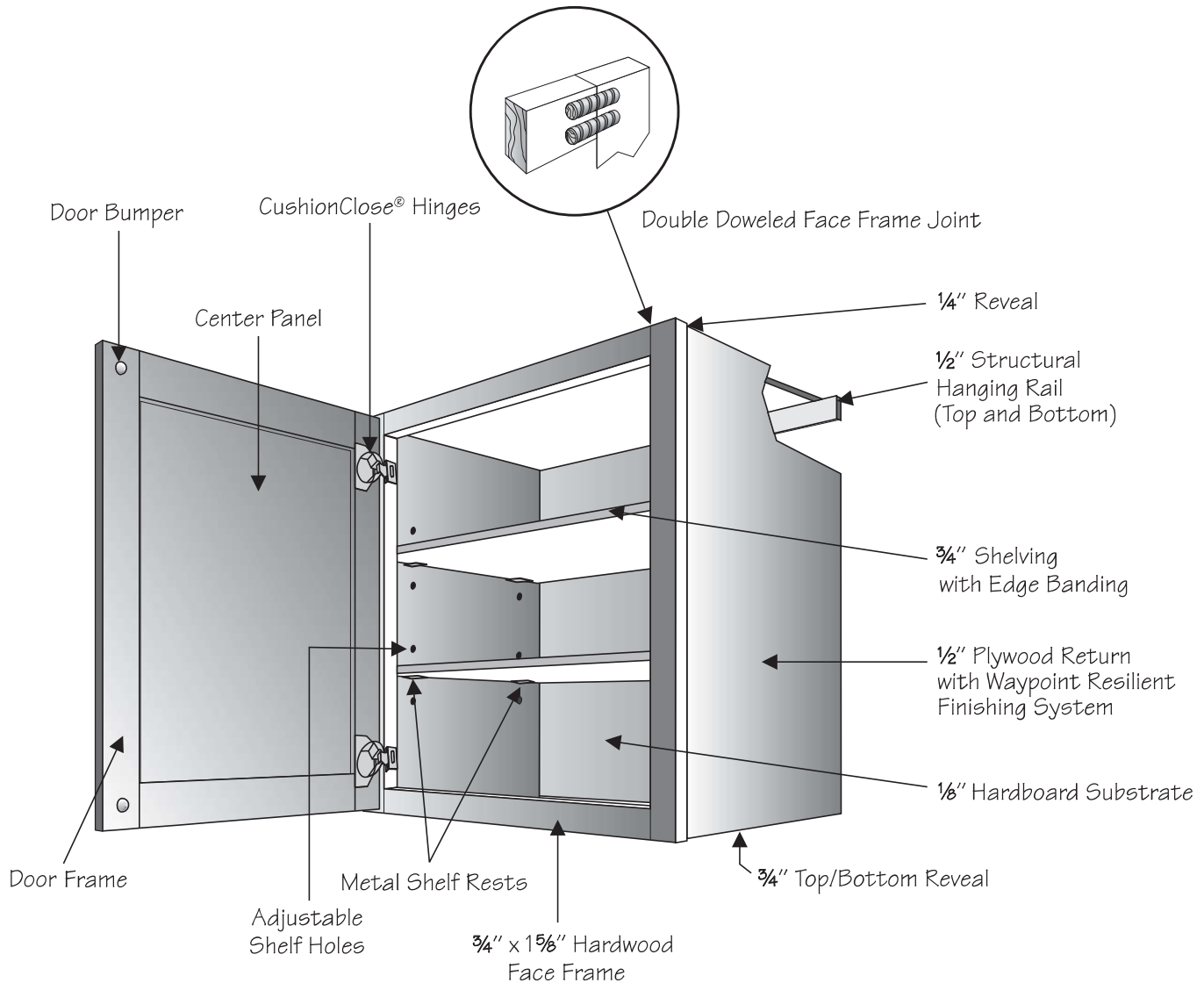
Inset Toe Kick

Inset toe kicks are constructed of $\frac{1}{2}$ " thick unfinished furniture board. Standard toe kick dimensions are 4" high and recessed $3\frac{1}{2}$ ". Universal Design toe kick dimensions are 8" high and recessed $6\frac{1}{2}$ " deep. All inset toe kicks require BTK8 Base Toe Kick for installation.

Continuous Improvement

In keeping with our policy of continuous product refinement, Waypoint reserves the right to change specifications in design and materials as conditions require.

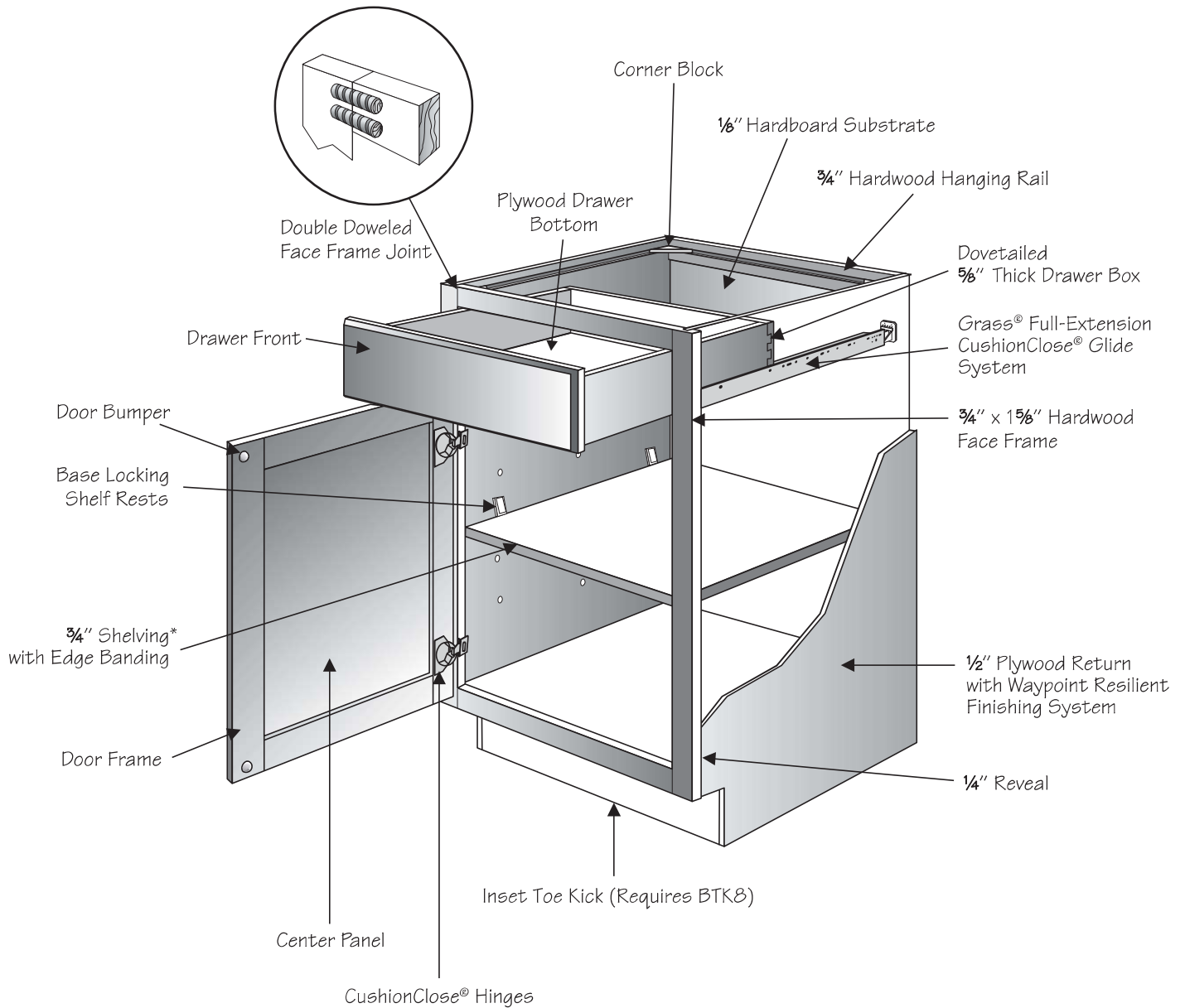
Waypoint wall cabinets are constructed using high quality materials and hardware. The drawing below illustrates and identifies the parts of a standard Waypoint wall cabinet.



NOTE: Single square door cabinets are hinged left and may be reversed in the field. Single cathedral and arch door cabinets must be ordered hinged left or right.

* Plywood can consist of a combination of veneer and furniture board layers to achieve superior product stability and finish quality. Plywood components meet the ANSI/HPVA hardwood and decorative plywood standards (www.hpva.org).

Waypoint base cabinets are constructed using high quality materials and hardware. The drawing below illustrates and identifies the parts of a standard Waypoint base cabinet.



NOTE: Base single door cabinets are hinged left and may be reversed in the field.

* Plywood can consist of a combination of veneer and furniture board layers to achieve superior product stability and finish quality. Plywood components meet the ANSI/HPVA hardwood and decorative plywood standards (www.hpva.org).